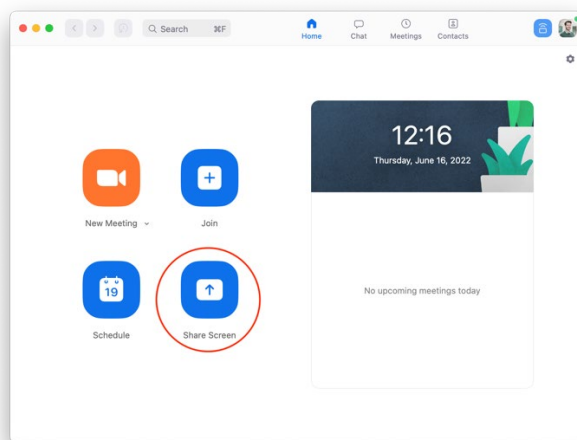
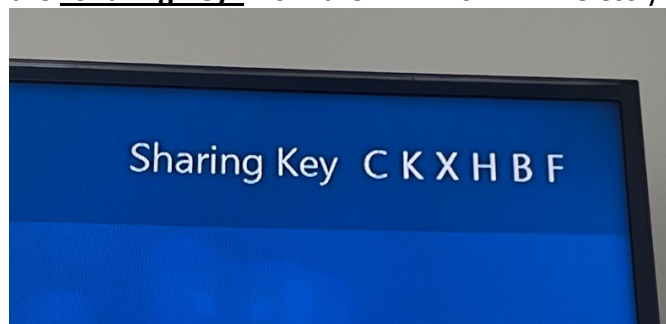


## 4212 Instructions (Presentation Only)

1. Turn on the Display by pressing the **“Power”** button on the bottom right of the TV. (A **“Solid BLUE”** line should appear around it)
2. Once the **“UCI BioSci” Logo** appears, you may connect in one of the following two ways:
  - a. Use the **HDMI Cable** at the lectern. This will automatically share your screen after about 5 seconds.
  - b. By opening the **Zoom App** on your device and selecting the Share Screen button. (Your screen may automatically share after about 5 seconds.)

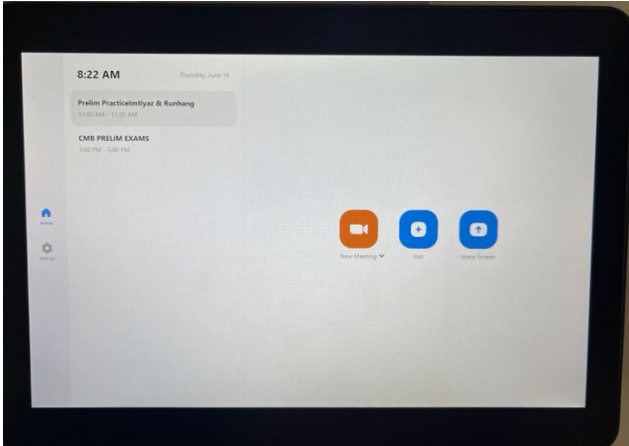


- i. If your screen doesn't automatically share, you will be prompted to enter the **“Sharing Key”** from the TV. This will wirelessly share your screen.



## 4212 Instructions (Zoom Meetings)

1. Turn on the Display by pressing the **“Power”** button on the bottom right of the TV. (A **“Solid BLUE”** line should appear around it)
2. Use the touch screen to **“Start A Meeting”**, **“Join A Meeting”**, or **“Share Screen”**.



3. You may manage the Zoom meeting by using the Zoom controls on the same touch panel or by joining the Zoom from another device as a host.
4. In order to **“Share Screen”** to the display during a Zoom meeting you can do either of the following:
  - a. To the HDMI cable at the lectern. This will automatically share your screen after about 5 seconds to the room as well as the Zoom meeting.
  - b. By opening the Zoom app on your device and selecting the Share Screen button.